

THE
RIDER[®]
RESIDENCES | MIAMI

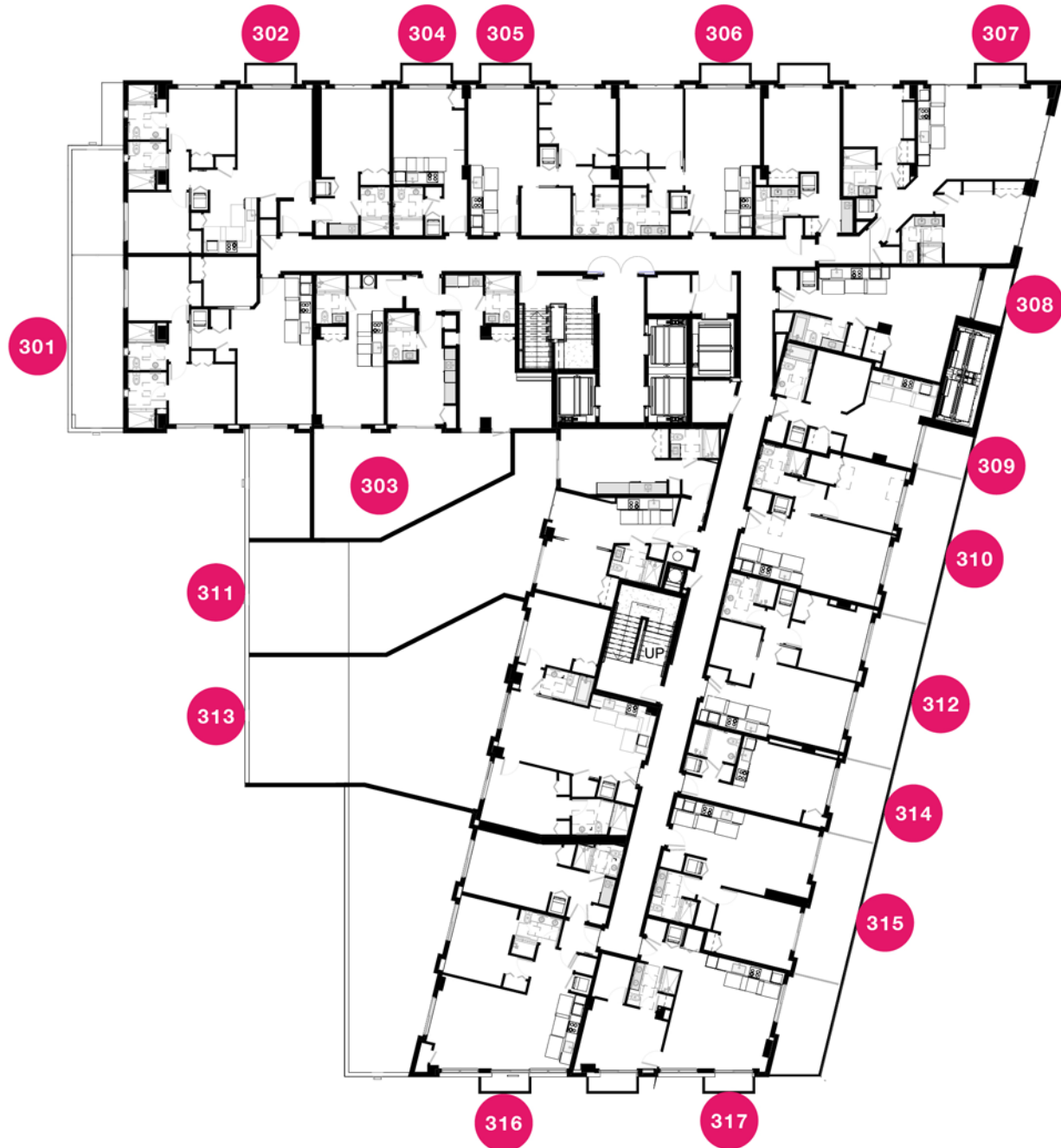
FLOOR PLANS

WARNING: THE CALIFORNIA DEPARTMENT OF REAL ESTATE HAS NOT INSPECTED, EXAMINED, OR QUALIFIED THIS OFFERING



THIRD FLOOR

THE RIDER
RESIDENCES | MIAMI

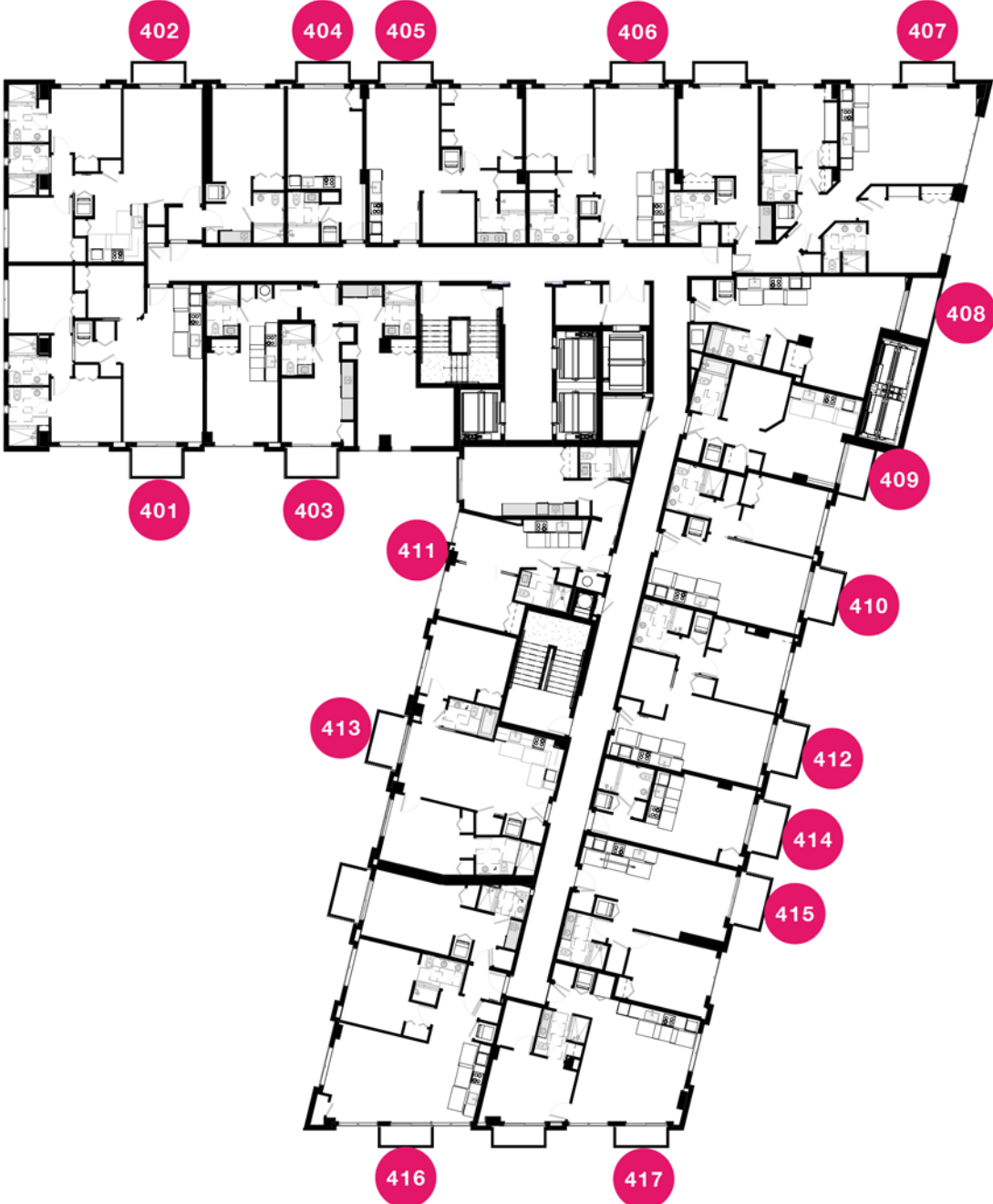


CIPRÉS **RILEA** **CERVERA**
REAL ESTATE • MIAMI

Equal Housing Opportunity

All square footages and dimensions, including (without limitation) ceiling heights, are estimates based on preliminary plans and will vary with actual construction. All floor plans, specification options and other development plans are proposed and conceptual only and are subject to change and will not reflect the exterior boundaries of the exterior walls and the centerline of interior demising walls between units and in fact vary from the square footages and dimensions that would be determined by using the description and definition of the "Unit" set forth in the Declaration, which generally only includes the interior airspace between the perimeter walls and excludes all interior structural components and other common elements or shared facilities. The method of measurement used herein is generally found in sales materials and is provided to allow a prospective buyer to compare the Units with units in other condominium projects that utilize the same method. For the dimensions of the Unit determined as set forth in the Declaration refer to the prospectus documents. Measurements of rooms set forth on this floor plan are generally taken at the farthest points of each room from the description above and as if the room were a perfect rectangle, without regard for any columns, soffits or other variations. Accordingly, the interior air space dimensions of the actual room will be smaller than the product obtained by multiplying the stated length and width. Terraces and other exterior areas are not part of the Unit.

FOURTH FLOOR

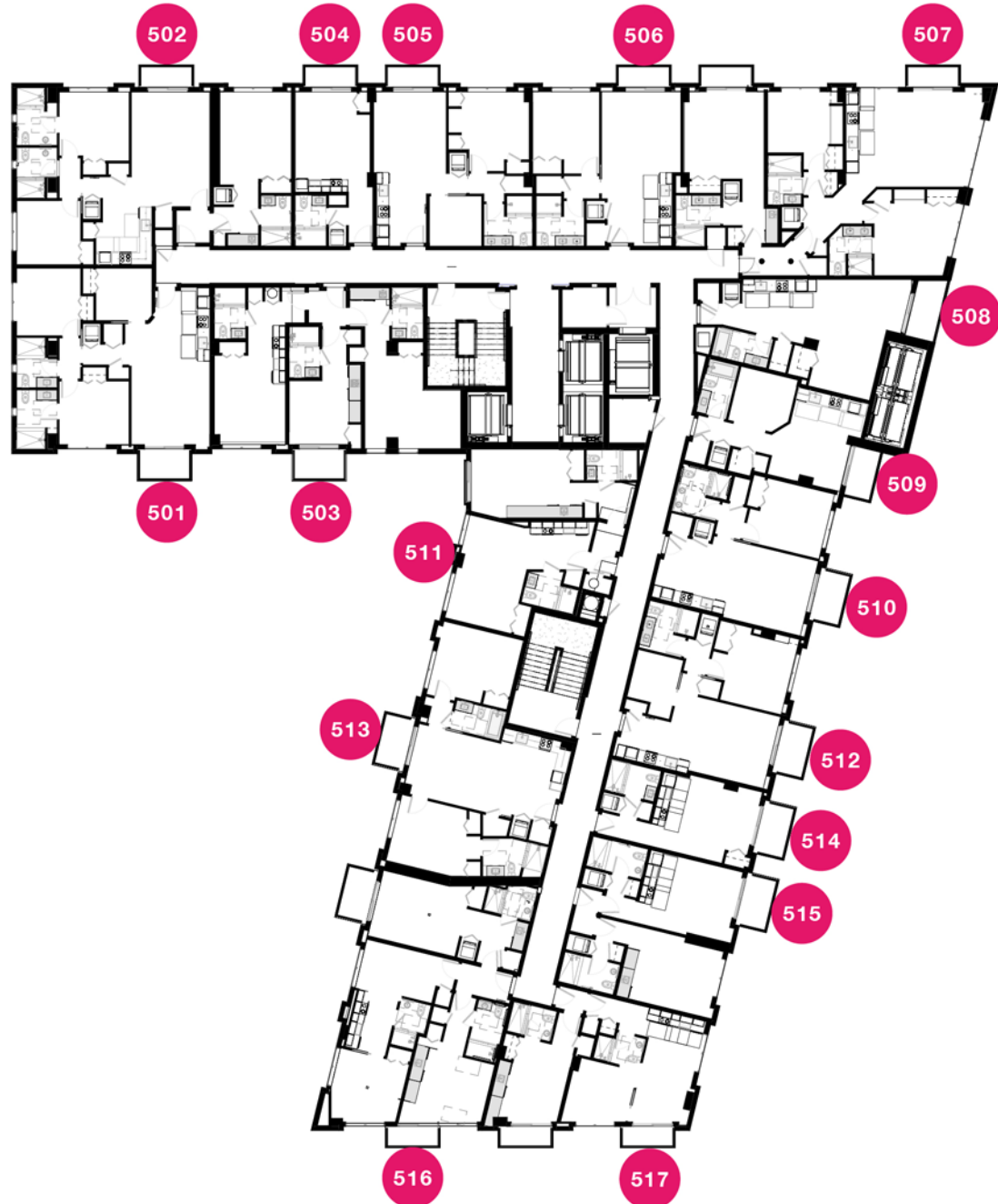


THE RIDER
RESIDENCES | MIAMI

CIPRÉS **RILEA** **CERVERA**
REAL ESTATE GROUP

All square footages and dimensions, including (without limitation) ceiling heights, are estimates based on preliminary plans and will vary with actual construction. All floor plans, specification options and other development plans are proposed and conceptual only and are subject to change and will not reflect the exterior boundaries of the exterior walls and the centerline of interior demarcating walls between units and in fact vary from the square footages and dimensions that would be determined by using the description and definition of the "Unit" set forth in the Declaration, which generally only includes the interior airspace between the perimeter walls and excludes all interior structural components and other common elements or shared facilities. The method of measurement used herein is generally found in sales materials and is provided to allow a prospective buyer to compare the Units with units in other condominium projects that utilize the same method. For the dimensions of the Unit determined as set forth in the Declaration refer to the prospectus documents. Measurements of rooms set forth on this floor plan are generally taken at the farthest points of each room from the description above and as if the room were a perfect rectangle, without regard for any columns, soffits or other variations. Accordingly, the interior air space dimensions of the actual room will be smaller than the product obtained by multiplying the stated length and width. Terraces and other exterior areas are not part of the Unit.

FIFTH FLOOR

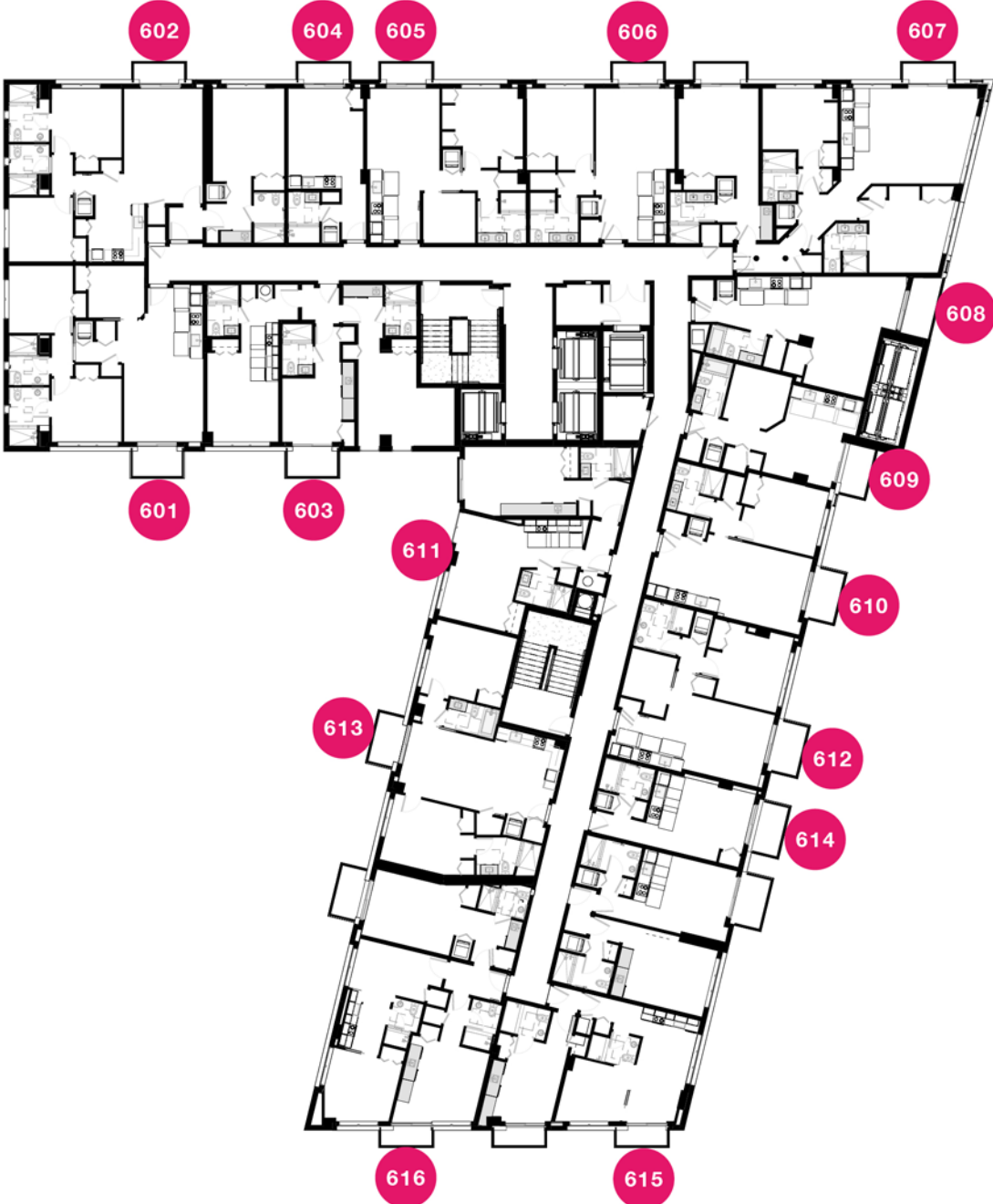


THE RIDER
RESIDENCES | MIAMI

CIPRÉS RILEA CERVERA
REAL ESTATE GROUP REAL ESTATE GROUP REAL ESTATE GROUP

DISCLAIMER
All square footages and dimensions, including (without limitation) ceiling heights, are estimates based on preliminary plans and will vary with actual construction. All floor plans, specification options and other development plans are proposed and conceptual only and are subject to change and will not reflect the exterior boundaries of the exterior walls and the centerline of major demising walls between units and in fact vary from the square footages and dimensions that would be determined by using the description and definition of the "Unit" set forth in the Declaration, which generally only includes the interior airspace between the perimeter walls and excludes all interior structural components and other common elements or shared facilities. The method of measurement used herein is generally found in sales materials and is provided to allow a prospective buyer to compare the Units with units in other condominium projects that utilize the same method. For the dimensions of the Unit determined as set forth in the Declaration refer to the prospectus documents. Measurements of rooms set forth on this floor plan are generally taken at the farthest points of each room (as described above and as if the room were a perfect rectangle), without regard for any columns, soffits or other variations. Accordingly, the interior air space dimensions of the actual room will be smaller than the product obtained by multiplying the stated length and width. Terraces and other exterior areas are not part of the Unit.

SIXTH FLOOR



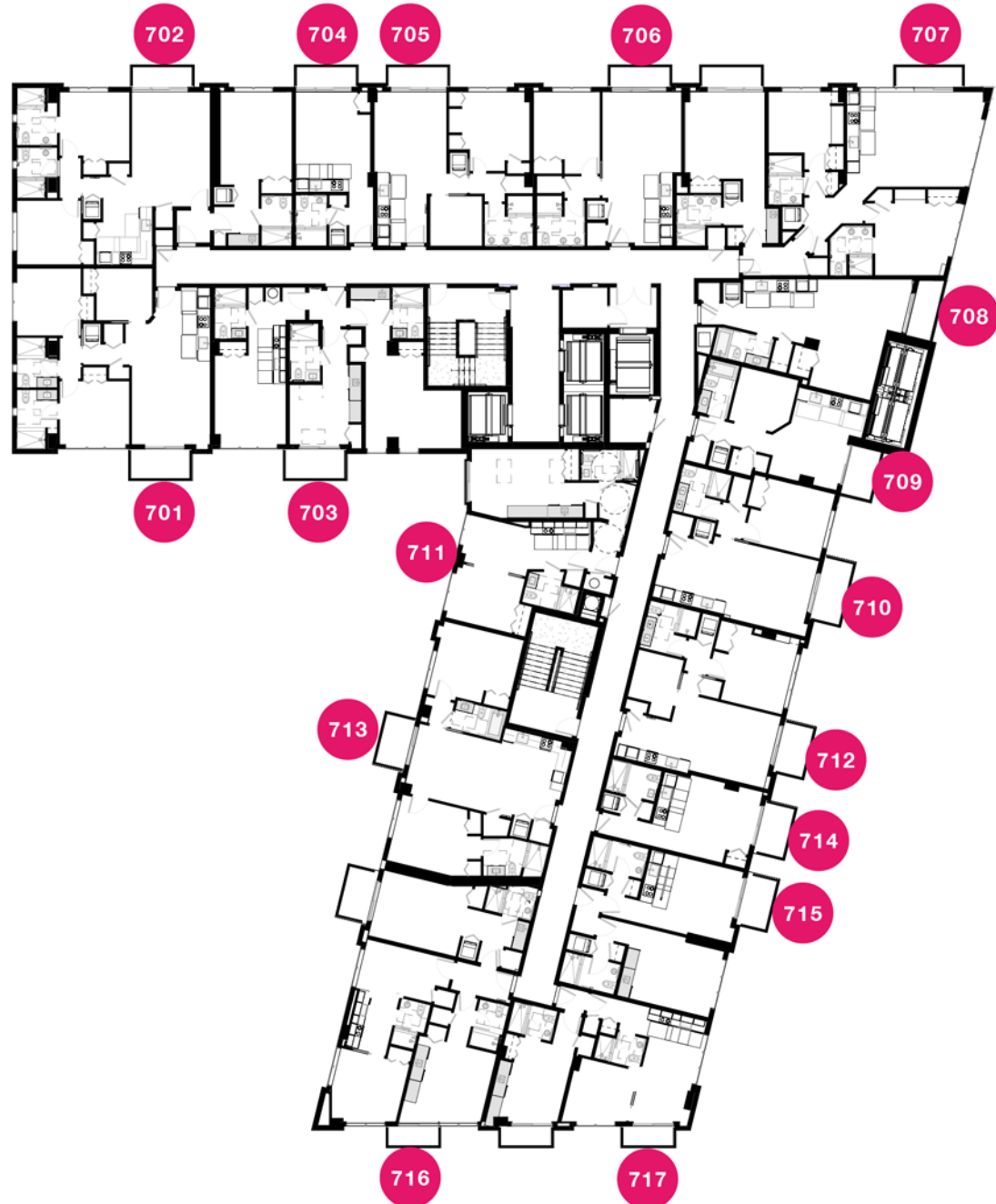
THE RIDER
RESIDENCES | MIAMI

CIPRÉS **RILEA** **CERVERA**
REAL ESTATE GROUP REAL ESTATE GROUP REAL ESTATE GROUP

Equal Housing Opportunity

All square footages and dimensions, including (without limitation) ceiling heights, are estimates based on preliminary plans and will vary with actual construction. All floor plans, specification options and other development plans are proposed and conceptual only and are subject to change and will not reflect the exterior boundaries of the exterior walls and the centerline of interior partitioning walls between units and in fact vary from the square footages and dimensions that would be determined by using the description and definition of the "Unit" set forth in the Declaration, which generally only includes the interior airspace between the perimeter walls and excludes all interior structural components and other common elements or shared facilities. The method of measurement used herein is generally found in sales materials and is provided to allow a prospective buyer to compare the Units with units in other condominium projects that utilize the same method. For the dimensions of the Unit determined as set forth in the Declaration refer to the prospectus documents. Measurements of rooms set forth on this floor plan are generally taken at the farthest points of each room (as described above and as if the room were a perfect rectangle), without regard for any columns, soffits or other variations. Accordingly, the interior air space dimensions of the actual room will be smaller than the product obtained by multiplying the stated length and width. Terraces and other exterior areas are not part of the Unit.

SEVENTH FLOOR



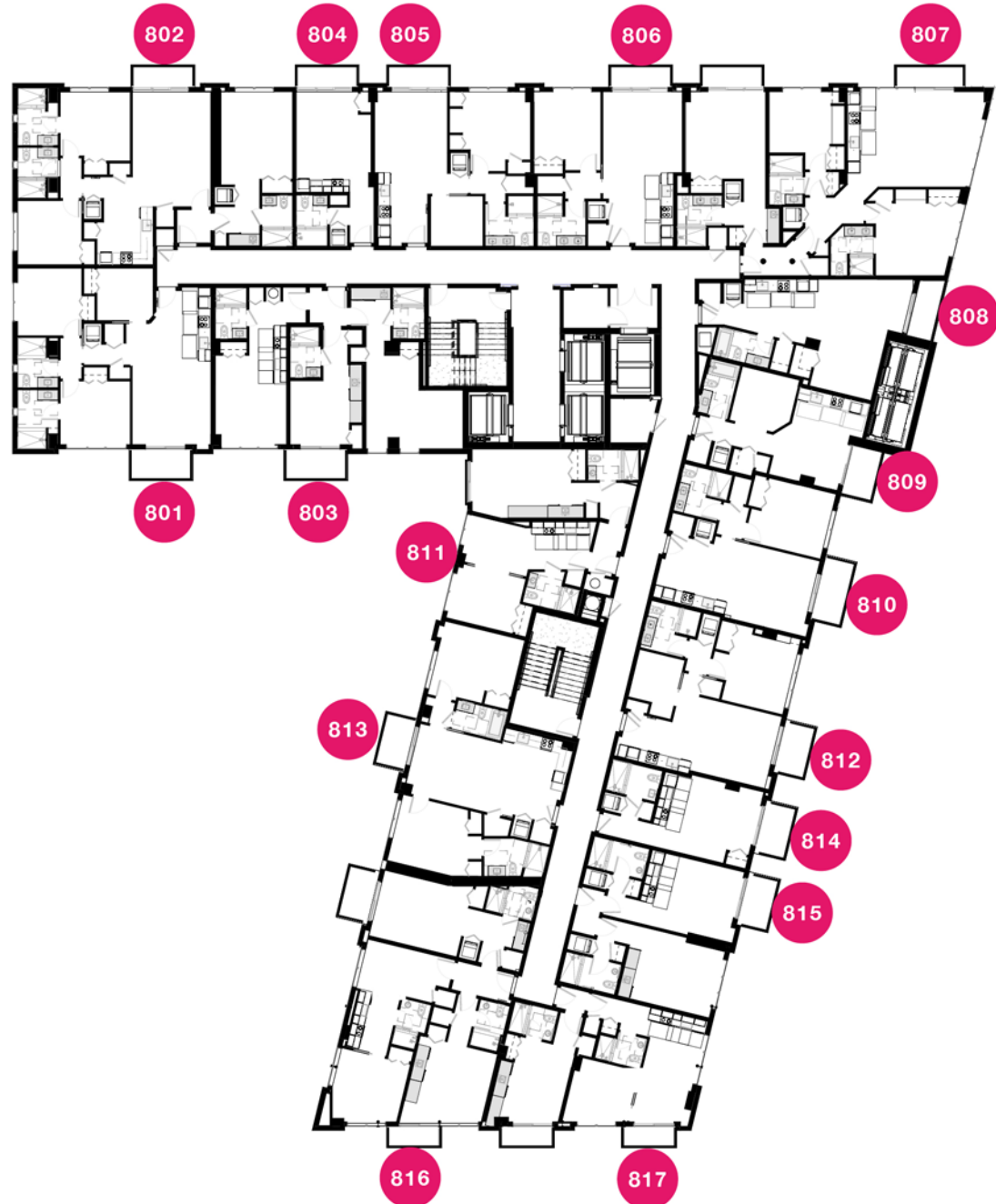
THE RIDER
RESIDENCES | MIAMI

CIPRÉS **RILEA** **CERVERA**
REAL ESTATE • MIAMI

DISCLAIMER
All square footages and dimensions, including (without limitation) ceiling heights, are estimates based on preliminary plans and will vary with actual construction. All floor plans, specification options and other development plans are proposed and conceptual only and are subject to change and will not reflect the exterior boundaries of the exterior walls and the centerline of major demising walls between units and in fact vary from the square footages and dimensions that would be determined by using the description and definition of the "Unit" set forth in the Declaration, which generally only includes the interior airspace between the perimeter walls and excludes all interior structural components and other common elements or shared facilities. The method of measurement used herein is generally found in sales materials and is provided to allow a prospective buyer to compare the Units with units in other condominium projects that utilize the same method. For the dimensions of the Unit determined as set forth in the Declaration refer to the prospectus documents. Measurements of rooms set forth on this floor plan are generally taken at the farthest points of each room (as described above and as if the room were a perfect rectangle), without regard for any columns, soffits or other variations. Accordingly, the interior air space dimensions of the actual room will be smaller than the product obtained by multiplying the stated length and width. Terraces and other exterior areas are not part of the Unit.

EIGHTH FLOOR

THE RIDER
RESIDENCES | MIAMI



CIPRÉS RILEA CERVERA
REAL ESTATE GROUP REAL ESTATE GROUP REAL ESTATE GROUP

DISCLAIMER
All square footages and dimensions, including (without limitation) ceiling heights, are estimates based on preliminary plans and will vary with actual construction. All floor plans, specification options and other development plans are proposed and conceptual only and are subject to change and will not reflect the exterior boundaries of the exterior walls and the centerline of interior demarcating walls between units and in fact vary from the square footages and dimensions that would be determined by using the description and definition of the "Unit" set forth in the Declaration, which generally only includes the interior airspace between the perimeter walls and excludes all interior structural components and other common elements or shared facilities. The method of measurement used herein is generally found in sales materials and is provided to allow a prospective buyer to compare the Units with units in other condominium projects that utilize the same method. For the dimensions of the Unit determined as set forth in the Declaration refer to the prospectus documents. Measurements of rooms set forth on this floor plan are generally taken at the farthest points of each room (as described above and as if the room were a perfect rectangle), without regard for any columns, soffits or other variations. Accordingly, the interior air space dimensions of the actual room will be smaller than the product obtained by multiplying the stated length and width. Terraces and other exterior areas are not part of the Unit.

NINETH FLOOR



THE RIDER
RESIDENCES | MIAMI

CIPRÉS **RILEA** **CERVERA**
REAL ESTATE • 1984

DISCLAIMER
All square footages and dimensions, including (without limitation) ceiling heights, are estimates based on preliminary plans and will vary with actual construction. All floor plans, specification options and other development plans are proposed and conceptual only and are subject to change and will not reflect the exterior boundaries of the exterior walls and the centerline of interior demarcating walls between units and in fact vary from the square footages and dimensions that would be determined by using the description and definition of the "Unit" set forth in the Declaration, which generally only includes the interior airspace between the perimeter walls and excludes all interior structural components and other common elements or shared facilities. The method of measurement used herein is generally found in sales materials and is provided to allow a prospective buyer to compare the Units with units in other condominium projects that utilize the same method. For the dimensions of the Unit determined as set forth in the Declaration refer to the prospectus documents. Measurements of rooms set forth on this floor plan are generally taken at the farthest points of each room (as described above and as if the room were a perfect rectangle), without regard for any columns, soffits or other variations. Accordingly, the interior air space dimensions of the actual room will be smaller than the product obtained by multiplying the stated length and width. Terraces and other exterior areas are not part of the Unit.

TENTH FLOOR



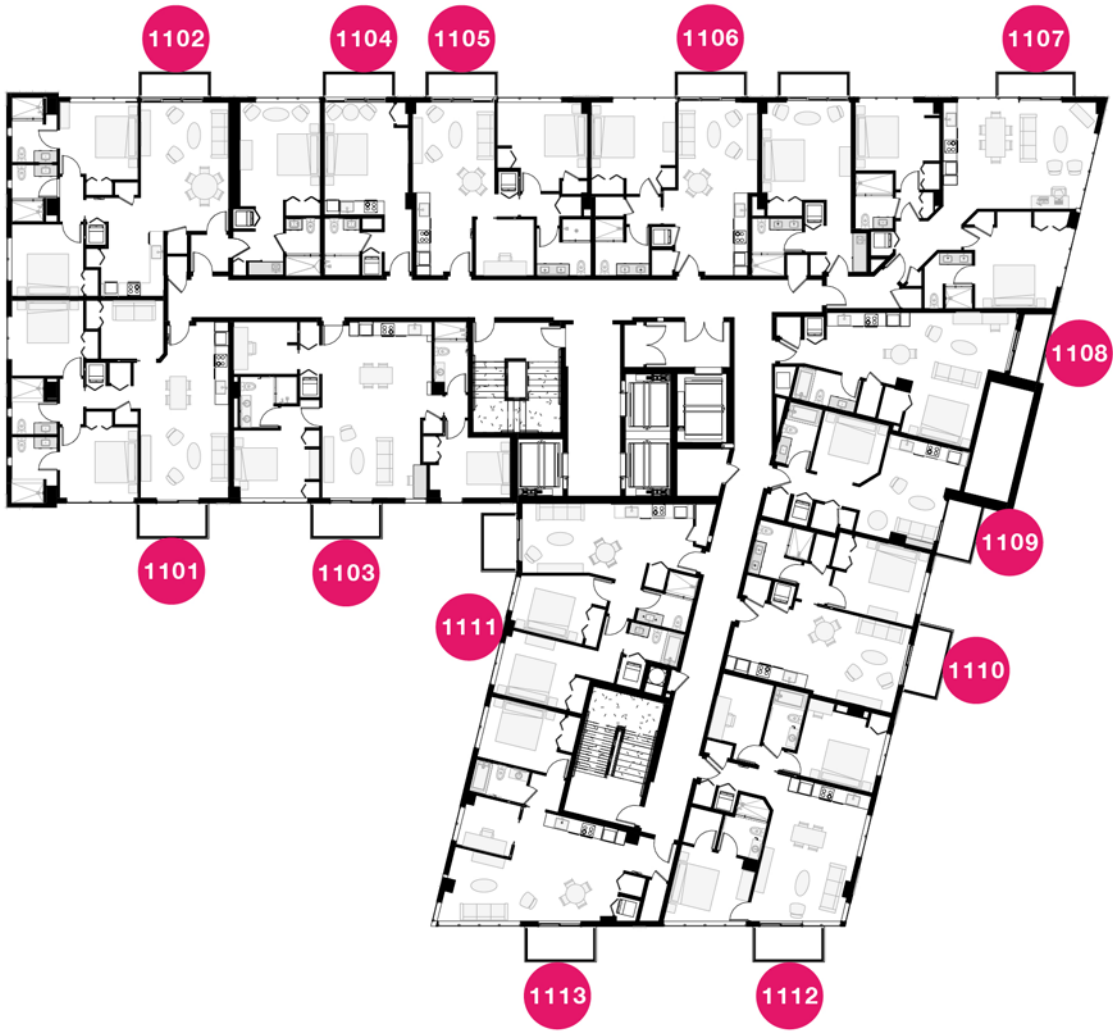
THE RIDER
RESIDENCES | MIAMI

CIPRÉS **RILEA** **CERVERA**
REAL ESTATE • 1984

DISCLAIMER
All square footages and dimensions, including (without limitation) ceiling heights, are estimates based on preliminary plans and will vary with actual construction. All floor plans, specification options and other development plans are proposed and conceptual only and are subject to change and will not reflect the exterior boundaries of the exterior walls and the centerline of interior demarcating walls between units and in fact vary from the square footages and dimensions that would be determined by using the description and definition of the "Unit" set forth in the Declaration, which generally only includes the interior airspace between the perimeter walls and excludes all interior structural components and other common elements or shared facilities. The method of measurement used herein is generally found in sales materials and is provided to allow a prospective buyer to compare the Units with units in other condominium projects that utilize the same method. For the dimensions of the Unit determined as set forth in the Declaration refer to the prospectus documents. Measurements of rooms set forth on this floor plan are generally taken at the farthest points of each room from the exterior walls and as if the room were a perfect rectangle, without regard for any columns, soffits or other variations. Accordingly, the interior air space dimensions of the actual room will be smaller than the product obtained by multiplying the stated length and width. Terraces and other exterior areas are not part of the Unit.

ELEVEN FLOOR

THE RIDER
RESIDENCES | MIAMI

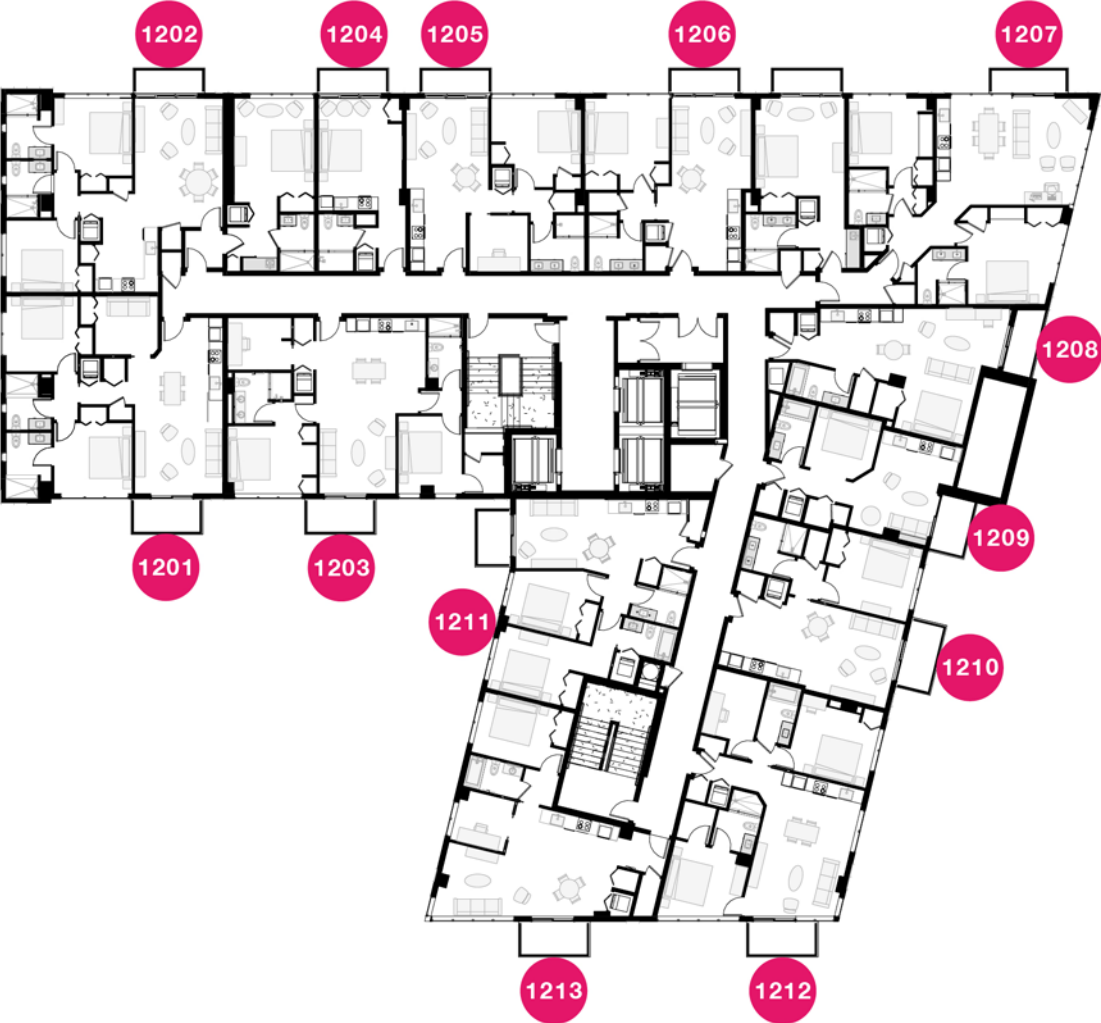


CIPRÉS **RILEA** **CERVERA**
REAL ESTATE • MIAMI

All square footages and dimensions, including (without limitation) ceiling heights, are estimates based on preliminary plans and will vary with actual construction. All floor plans, specification options and other development plans are proposed and conceptual only and are subject to change and will not reflect the exterior boundaries of the exterior walls and the centerline of interior demarcating walls between units and in fact vary from the square footages and dimensions that would be determined by using the description and definition of the "Unit" set forth in the Declaration, which generally only includes the interior airspace between the perimeter walls and excludes all interior structural components and other common elements or shared facilities. The method of measurement used herein is generally found in sales materials and is provided to allow a prospective buyer to compare the Units with units in other condominium projects that utilize the same method. For the dimensions of the Unit determined as set forth in the Declaration refer to the prospectus documents. Measurements of rooms set forth on this floor plan are generally taken at the farthest points of each room from the description above and as if the room were a perfect rectangle, without regard for any columns, soffits or other variations. Accordingly, the interior air space dimensions of the actual room will be smaller than the product obtained by multiplying the stated length and width. Terraces and other exterior areas are not part of the Unit.

TWELVE FLOOR

THE RIDER
RESIDENCES | MIAMI



CIPRÉS **RILEA** **CERVERA**
REAL ESTATE • MIAMI

All square footages and dimensions, including (without limitation) ceiling heights, are estimates based on preliminary plans and will vary with actual construction. All floor plans, specification options and other development plans are proposed and conceptual only and are subject to change and will not reflect the exterior boundaries of the exterior walls and the centerline of interior demarcating walls between units and in fact vary from the square footages and dimensions that would be determined by using the description and definition of the "Unit" set forth in the Declaration, which generally only includes the interior airspace between the perimeter walls and excludes all interior structural components and other common elements or shared facilities. The method of measurement used herein is generally found in sales materials and is provided to allow a prospective buyer to compare the Units with units in other condominium projects that utilize the same method. For the dimensions of the Unit determined as set forth in the Declaration refer to the prospectus documents. Measurements of rooms set forth on this floor plan are generally taken at the farthest points of each room (as described above and as if the room were a perfect rectangle), without regard for any columns, soffits or other variations. Accordingly, the interior air space dimensions of the actual room will be smaller than the product obtained by multiplying the stated length and width. Terraces and other exterior areas are not part of the Unit.



*THE
RIDER*®

GET IN TOUCH

Jake Lecce | +19175106255 | info@theriderwynwood.com